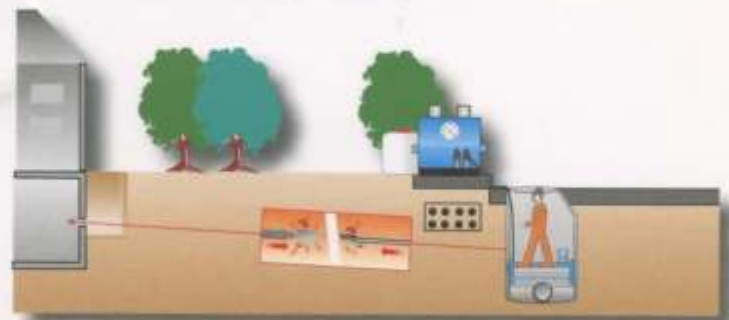
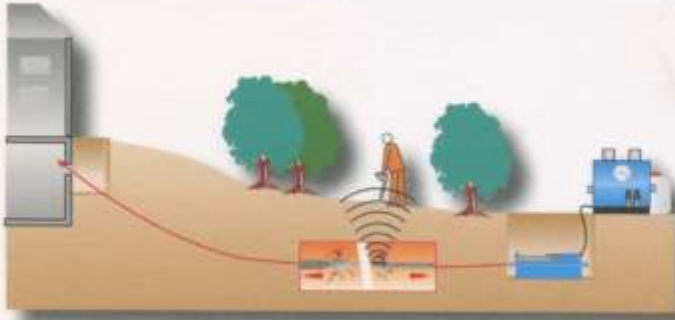


GRUNDOPIT / GRUNDOBORE



House connection with Grundopit using the fluid-assisted technique



Pit - pit or directly into the cellar

Manhole - pit or directly into the cellar

Grundopit (Standard / Power version):
Lengths up to 50 m /
ND 160 also suitable
for rock bores



Drive: **Hydraulic unit TT B 20** with
Diesel engine 24,4 kW



Grundopit S (manhole)
up to 50 m / ND 110 for
„the last mile” when instal-
ling data lines from out of
manholes and for sewage
house connections.

House connection with Grundobore using the auger boring technique



Grundobore 200S

Installation unit for the non-steerable and steerable installation of house connections ND 100 - 150 and for the installation of product and protection pipes up to OD 220.

- 1m-manhole version
- Simple installation due to separable system components
- High installation precision
- Pressings up to approx. 20 m
- Transportation of waste spoil into the target pit
- Measuring system: transmitting sonde



Grundobore 400

Installation unit for the non-steerable and steerable installation of house connections in all soil classes and for the installation of product and protection pipes up to OD 406.

- High installation precision
- Minimum ground cover
- Solid construction to suit jobsites, no vibrations
- Pressings up to approx. 50 m bores
- No disturbance of the surrounding soil
- Applicable according to the latest standards
- Measuring system: laser or video-theodolite

